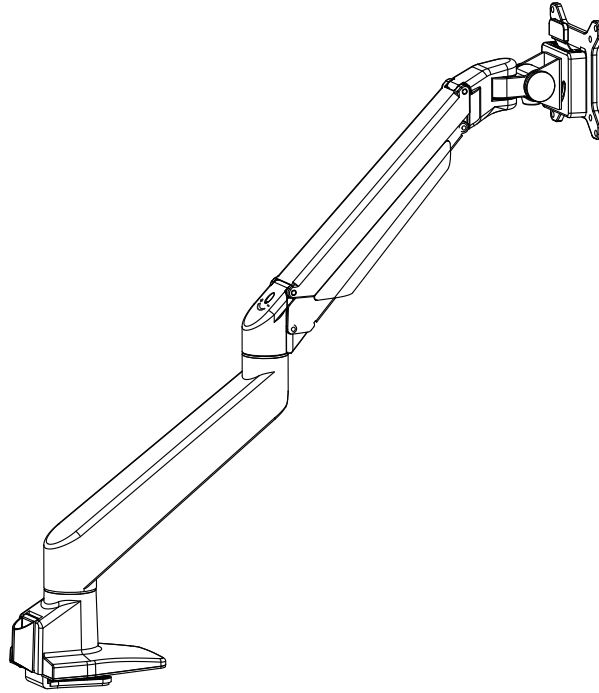
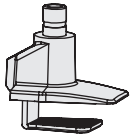


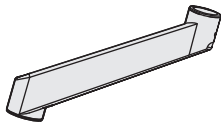
Heavy Duty Monitor Arm



COMPONENT CHECKLIST



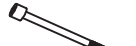
A
Desk Clamp
(x1)



B
Lower Arm
(x1)



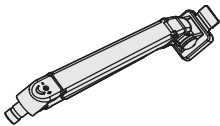
a
Screw
M4x12mm
(x4)



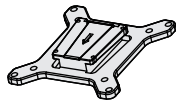
b
Screw
M8x160mm
(x1)



c
Bolt Through
Plate
(x1)



C
Upper Arm
(x1)



D
VESA Plate
(x1)



d
6mm Allen Key
(x1)



e
4mm Allen Key
(x1)



REQUIRED TOOLS

- Phillips Head Screwdriver

WEIGHT RANGE

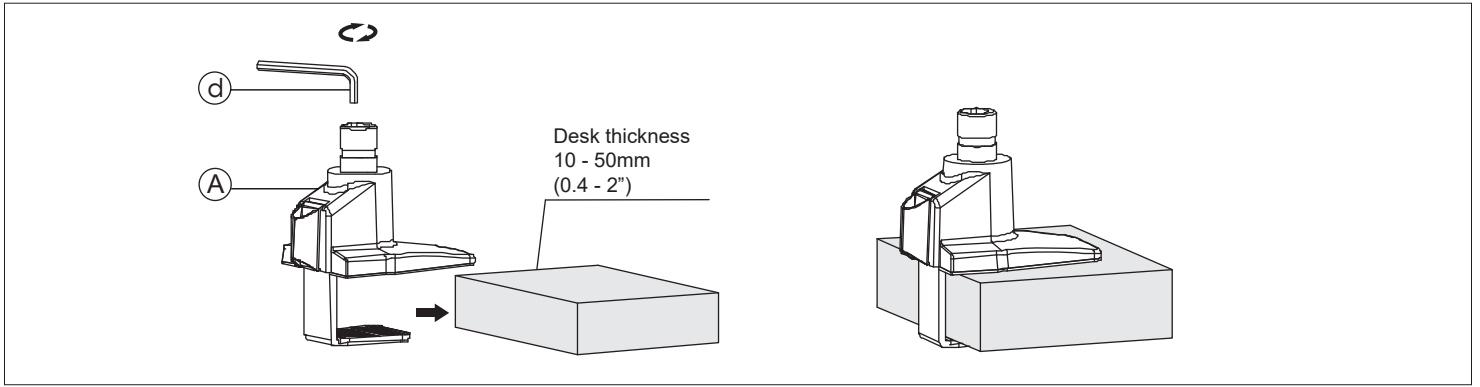
Flat Monitors
8 - 18kg
(17.6 - 40lbs)

Curved Monitors
8 - 10kg
(17.6 - 22lbs)

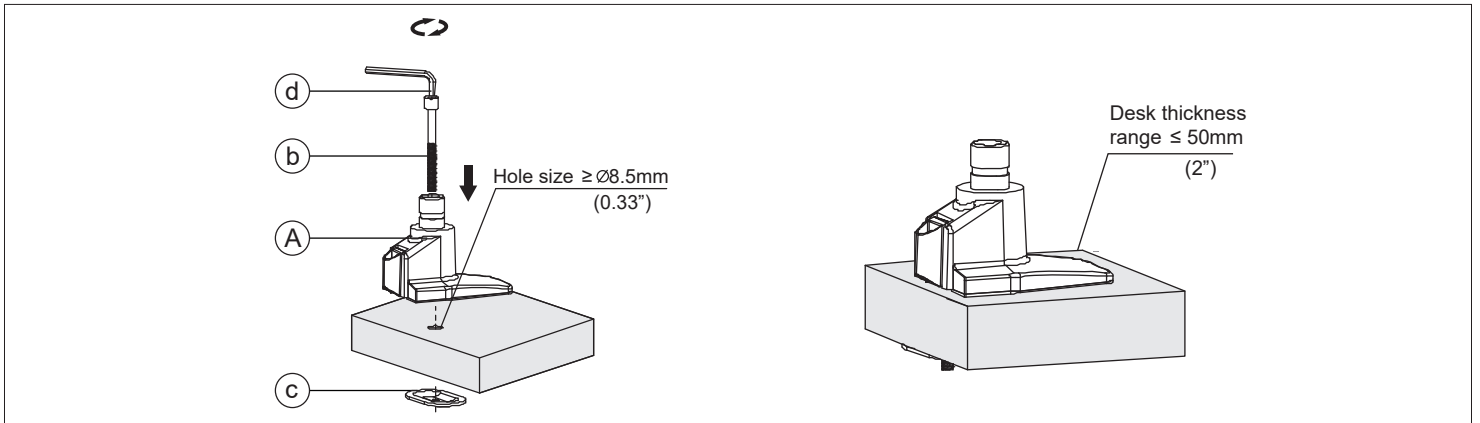
IMPORTANT INFORMATION

- ! Please ensure this product is installed as per these installation instructions.
- ! The manufacturer accepts no responsibility for incorrect installation.
- ! Curved monitors, deep devices (such as all-in-one PCs) and offset VESA locations exert additional leverage that can exceed the capacity of the mount even though the monitor weight may be within the stated range. Please contact Atdec if you would like further information.

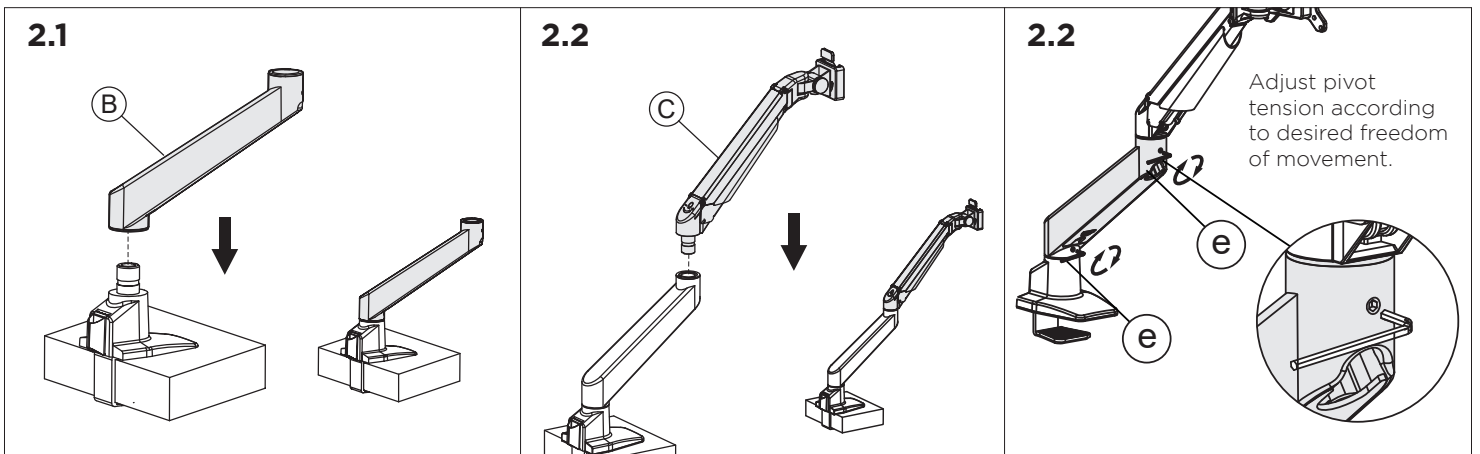
1A Base Installation - Desk Clamp



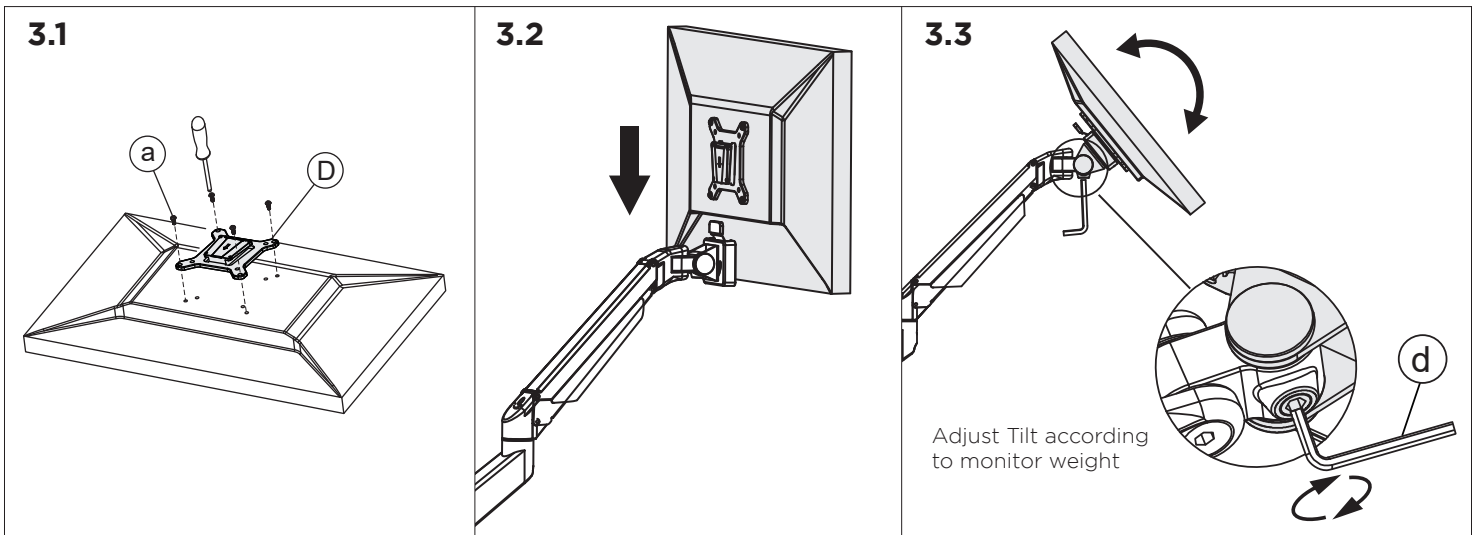
1B Base Installation - Bolt Through



2 Assemble Arm



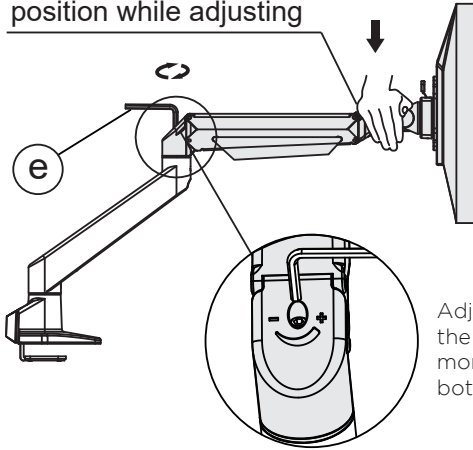
3 Assemble Monitor to Arm and Adjust Tilt Tension



4 Adjust Arm Spring Tension

4.1

Arm must be in horizontal position while adjusting

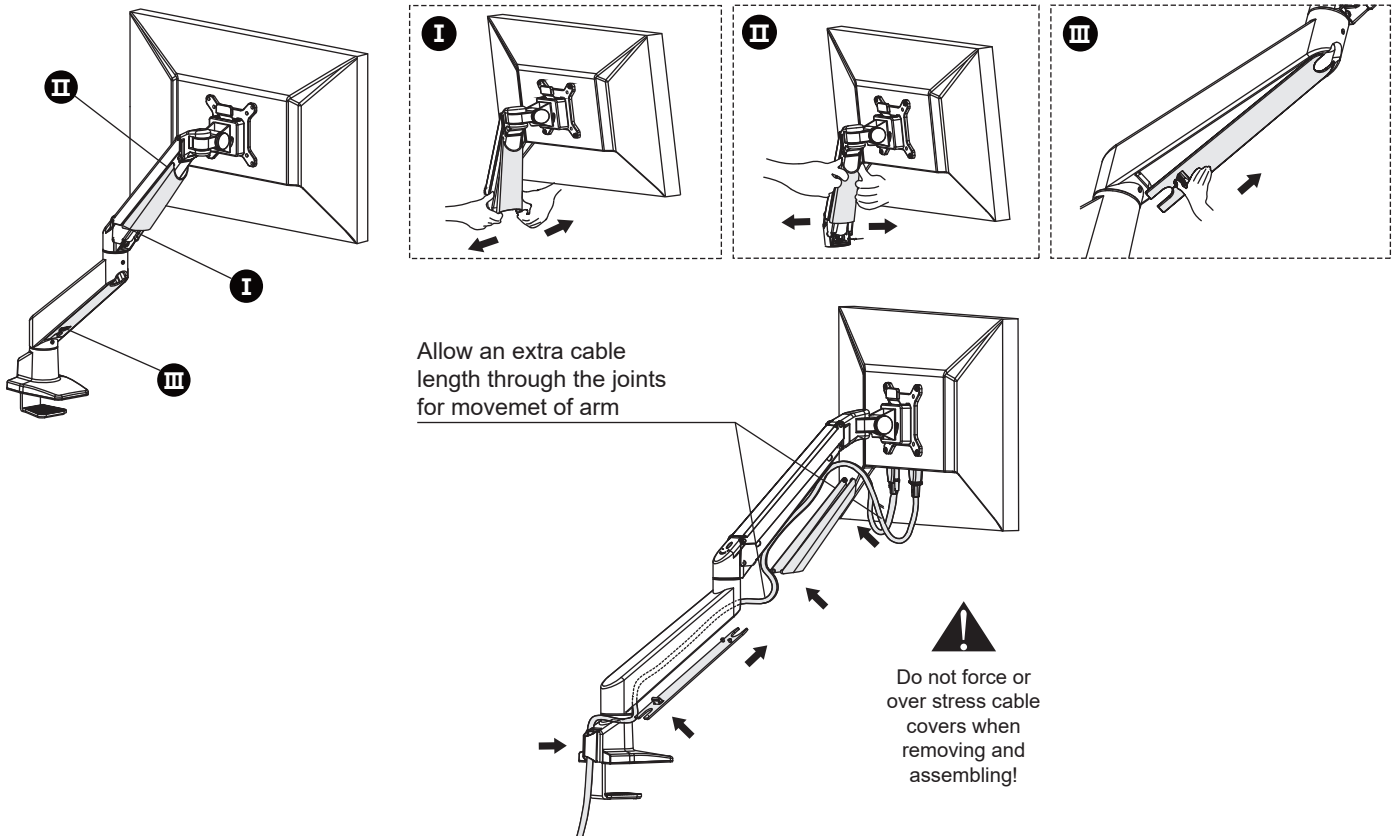


Adjust tension until the arm holds the monitor in top and bottom positions.

5 Cable management

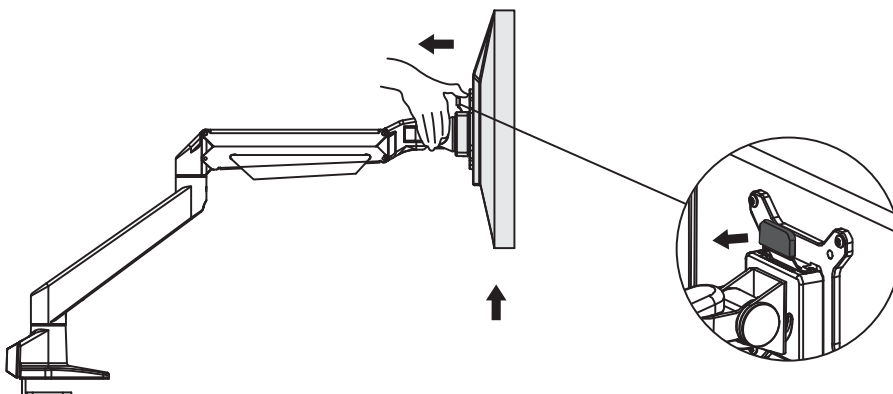
5.1

Remove Cable Covers



6 Removing Monitor from Arm

6.1



Pull tab back and lift monitor off end of arm

Product Dimensions

