

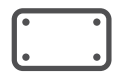
# AWMS-3-13714

400mm Post With Three Monitor Arms

The **AWMS-3-13714** is a triple display combination attached to a 400mm post. Display height, optimal viewing angle and orientation can be set to individual requirements.



## Set & Forget desk mounting solutions



75 x 75  
100 x 100



Flat: 12kg  
Curved: 8kg

### Tool-free

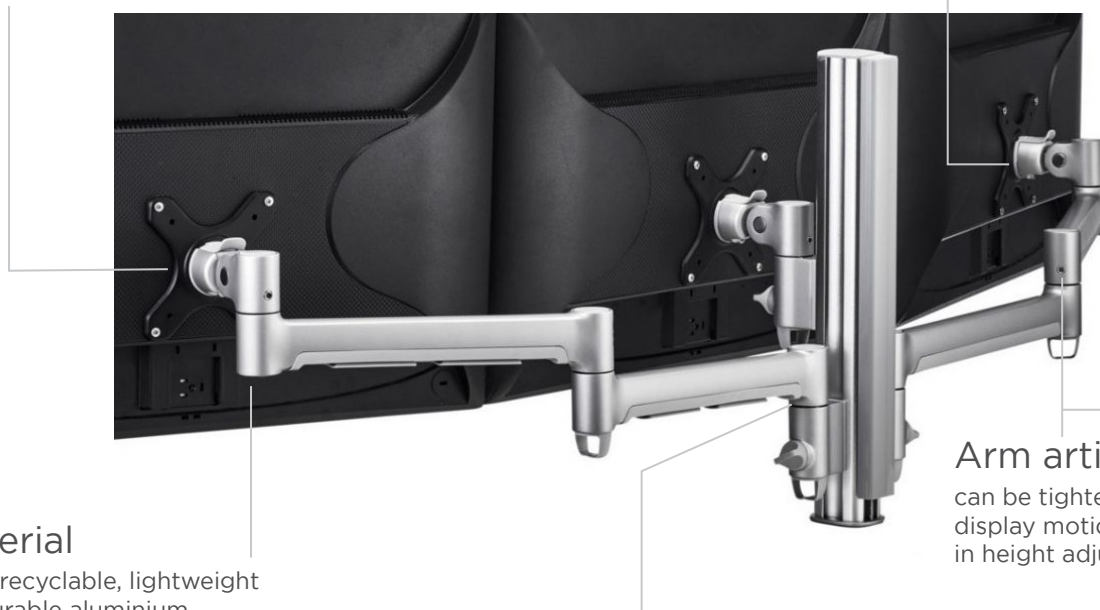
viewing angle adjustment.  
Landscape to portrait  
rotation

### Ideal for

3 x 24" displays or 3 x 27" with  
the monitor slider accessory  
(see reverse page for details)

### Quick display release

mechanism for easy installation



### Material

100% recyclable, lightweight  
yet durable aluminium

Available in silver, black or white



### Arm articulation

can be tightened to minimise  
display motion & reverberation  
in height adjustable desks

### Arm rotation stopper

Built-in 180° rotation stopper to  
prevent interference with walls  
or desk partitions

### Advanced cable management

10 year warranty

## AWM modular mounting family



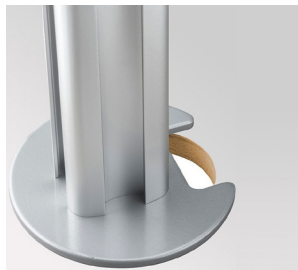
### Desk fixing options (sold separately)

**Bolt through** AWM-FB



Offers flexible mounting position. Used when attachment to the edge of the desk is not possible. Suitable for desks up to 33mm.

**Grommet clamp** AC-GC



Can be used as a bolt through or grommet hole mounting option. The plate provides extra stability for heavy loads.

**F-clamp** AWM-FF



Traditional two-piece design that is used for retrofit and thicker desk surfaces up to 79mm.

**C-clamp** AWM-FC



Suited to desks with potential to interfere with the elements under the desk such as cable cages. Suitable for desks up to 33mm.

### Accessories

The display mounting head can be replaced with the AWM-RL dual crossbar to accommodate two monitors. The arm can also be attached to any AWM post via AWM-LC channel clamp.

**Notebook holder**  
SNTB



**Slider accessory**  
AWM-HS



**Mini PC mounting plate**  
AC-MP



**Universal tablet holder**  
AC-AP-UTH



### Ordering AWMS-3-13714 and accessories

**AWMS-3-13714 consists of the following parts:**

- 1 x AWM-P40 400mm post
- 2 x AWM-A71 display arms
- 1 x AWM-A13 display arm

**Desk fixing options:**

- AWM-FB bolt through
- AWM-FF F-clamp
- AWM-FC C-clamp
- AC-GC grommet clamp

**Accessories:**

- AWM-HS monitor slider accessory
- SNTB notebook holder
- AC-MP mini PC mounting plate
- AC-AP-UTH universal tablet holder

For all AWM components, add -S for silver, -B - for black and -W for white at the end of the main code.



Atdec Uncover™ is where our infinite mounting possibilities become your specific mounting solutions.



**Call us on 02 8729 5000 to discuss your next project or visit [atdec.com.au/workspace](https://atdec.com.au/workspace)**